

(SEE FOOTNOTE NUMBER FOR INFORMATION ON THESE GUN CONNECTIONS)

GUN MODEL						
		ANSI ¹ FLANGE	NELSON FLANGE	METRIC FLANGE	FNPT THREAD	FBSP THREAD
75	F75	✓	✓ ²	✓	✓ sizes 1.5" 2"	✓ sizes 1.5" 2"
	SR75	✓	✓ ²	✓	✓ sizes 1.5" 2"	✓ sizes 1.5" 2"
100	F100	✓	✓ ²	✓ ^{43° gun only}	✓ size 2" 2.5"	✓ size 2"
	SR100	✓	✓ ²	✓	✓ size 2" 2.5"	✓ size 2"
	SRNV100	∅	∅	∅	✓ size 2"	✓ size 2"
150	F150	✓	✓ ³	✓ ⁴	✓ ⁵	✓ ⁵
	SR150	✓	✓ ³	✓ ⁴	✓ ⁵	✓ ⁵
	SRA150	✓	✓ ³	✓ ⁴	✓ ⁵	✓ ⁵
200	F200	✓	✓	∅	✓ ⁵	∅
	SR200	✓	✓	✓ ⁴	✓	∅

- ✓ = Indicates that the gun connection options are available on the gun lower unit (for more detail see corresponding footnote key below). The dimensions of the connections and the hole threads are shown on the next page.
- ∅ = Indicates that the connection is not available on the gun

¹ The ANSI flange sizes which are available are (2" for model 75 & 100 guns); (3" for model 150 guns) and (4" for model 200 guns). The bolts which are needed for connecting the ANSI flanged gun must have thread 1/2-13 UNC-2B. This thread is tapped into the holes which are used for connection of the flange to the riser flange. To get the 4" ANSI flange on the F200, an adapter is required (part #10565). The (8) flange holes are threaded 1/2-13 UNC-2B. The adapter (part #10565) is sold separately. Bolts for the (8) threaded holes are not shipped with the flange adapter.

² The Nelson Flange is unique to NIC. The gun can connect to pipe thread by using an adapter (flange-to-thread adapter). These add-on adapters are available for sizes (2" FNPT part #6860, FBSP part #7050); (2.5" FNPT part #7040, FBSP part #7051) All adapters are sold separately. The Nelson flange can also mate to the 2" QC valve key. The bolts which are needed for connecting the Nelson flange must have thread 3.12-18 UNC-2B. This thread is tapped into the holes. Bolts used for the threaded flange holes (6) are included and shipped with the gun.

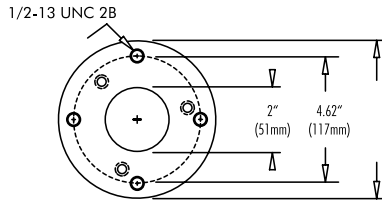
³ The bolts and nuts are included and shipped with the gun for connecting through the flange holes (6 bolts and nuts).

⁴ The bolts (no nuts required) are included and shipped with the gun for the metric threaded flange holes (6 bolts).

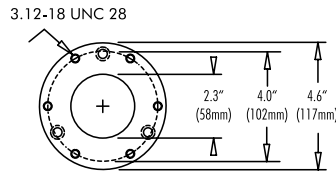
⁵ Thread connection for these guns are comprised of the Nelson flange gun plus an add-on adapter (flange-to-thread adapter). Add-on adapters are available in sizes (3" FNPT part #8403-001, FBSP part #8820); (3.5" FNPT part #6621, FBSP part #6621-001) and (4" FNPT part #9127). All these 'flange-to-thread adapters' are sold separately.

75 & 100 SERIES

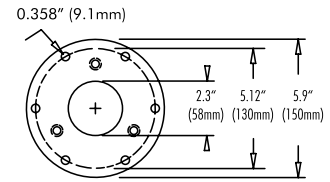
ANSI



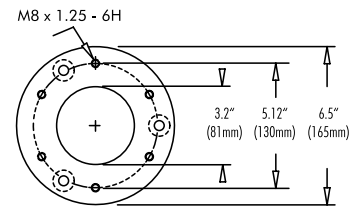
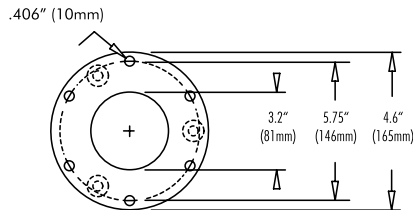
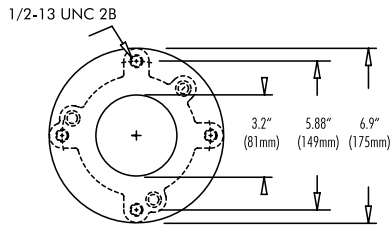
NELSON



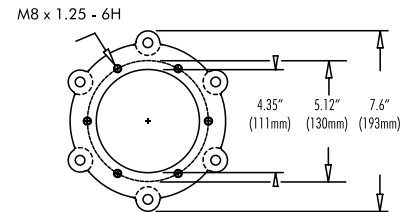
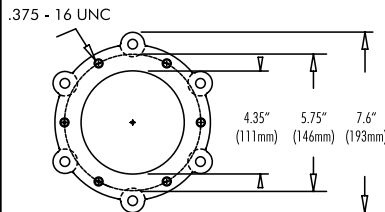
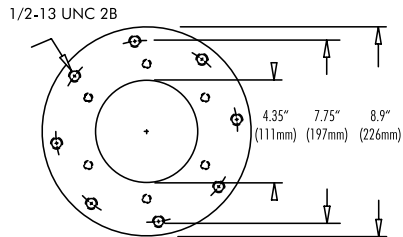
METRIC



150 SERIES



200 SERIES



75 SERIES BIG GUN SPECIFICATION

1. GENERAL:

The 75 Series Nelson Big Gun® sprinklers (models SR75 and F75) shall be capable of operating in a pressure range from 40 PSI through 80 PSI. The nozzle size range is from .4" through 0.7" for taper bore nozzles. Optional trajectory angles on the SR75 and the F75 shall be 18° and 24°. The gun shall be provided with optional connections at the base consisting of Nelson Flange, Metric Flange, ANSI/DIN Flange types, 1 ½" 2" or 2 ½" Female NPT cast iron flange adapters shall be optional accessories.

2. DESIGN

1. The **sprinkler body** range tube and drive arm shall be of aluminum construction. The range tube shall have non-clog straightener vanes extended the full length of the range tube to reduce turbulence and provide greater diameter of coverage. All wear points or strike areas shall be constructed of stainless steel or polyurethane for longer life.

2. The **drive arm** shall be equipped with ball bearings at the pivot point and shall have a replaceable drive vane. Part circle operation shall be accomplished with dual drive and reverse drive vane. The ball bearings shall be lubricated and sealed to eliminate the need of grease zirks and frequent maintenance. The drive spoon shall be vanned for reliable drive power. The drive arm weight shall be adjustable to increase or decrease the drive power if desired.

3. The **lower bearing** assembly shall be constructed with an aluminum upper housing and bronze lower housing and shall be equipped with dual ball bearing for ease of rotation and less wear. The bearing assembly shall be sealed and lubricated eliminating the need for grease zirks and frequent maintenance.

4. The **braking system** shall be a constant friction disc brake. It shall have pre-load brake springs for proper rotation on uneven terrain. It shall be fully shielded to prevent contamination from outside sources.

5. The **part circle** models shall be equipped with engagement and disengagement stops that are easily set. They shall be provided with easily accessible bolt heads or flex-handle stops as desired.

6. The sprinkler **nozzle options** shall be available with taper ring nozzles. All nozzle sizes shall be interchangeable without any adjustment required on the Big Gun® sprinkler.

100 SERIES BIG GUN SPECIFICATION

1. GENERAL:

The 100 Series Nelson Big Gun® sprinklers (models SR100 and F100) shall be capable of operating in a pressure range from 40 PSI through 110 PSI. The nozzle size range is from .5" through 1.0" for taper bore nozzles, from .71 through .96 for ring type nozzles and from 16mm through 24mm for taper-ring nozzles. Optional trajectory angles on the SR100 and the F100 shall be 18° 21° 24° and 43°. Materials used shall be acceptable for most irrigation water conditions. All exposed metal parts shall be stainless steel, brass, or aluminum. Welds and seals shall be air pressure checked at the factory to assure against water leakage. The gun shall be provided with optional connections at the base consisting of Nelson Flange, Metric Flange, ANSI/DIN Flange type, 2" or 2 ½" Female NPT cast iron flange adapters shall be optional accessories.

2. DESIGN

1. The **sprinkler body** range tube and drive arm shall be of aluminum construction. The range tube shall have non-clog straightener vanes extended the full length of the range tube to reduce turbulence and provide greater diameter of coverage. All wear points or strike areas shall be constructed of stainless steel or polyurethane for longer life.
2. The **drive arm** shall be equipped with ball bearings at the pivot point and shall have a replaceable vaned self-cleaning drive vane. Self adjusting drive vane to give consistent drive and arm rate in full operating range. Part circle operation shall be accomplished with dual drive and reverse drive vane. The ball bearings shall be lubricated and sealed to eliminate the need of grease zirks and frequent maintenance. The drive spoon shall be vaned for reliable drive power. The drive arm weight shall be adjustable to increase or decrease the drive power if desired.
3. The **lower bearing** assembly shall be constructed with an aluminum housing and shall be equipped with dual ball bearing for ease of rotation and less wear. The bearing assembly shall be sealed and lubricated eliminating the need for grease zirks and frequent maintenance.
4. The **braking system** shall be a constant friction disc brake of Delrin plastic material on brass. It shall have pre-load brake springs for proper rotation on uneven terrain. It shall be fully shielded to prevent contamination from outside sources.
5. The **part circle** models shall be equipped with precise arc control stops that are easily set. They shall be provided with easily accessible bolt heads or flex-handle stops as desired.
6. The sprinkler **nozzle options** shall be available with taper bore, ring or taper-ring type nozzles. All nozzle types shall be interchangeable without any adjustment required on the Big Gun® sprinkler.

150 SERIES BIG GUN SPECIFICATION

1. GENERAL:

The 150 Series Nelson Big Gun® sprinklers (models SR150, SRA150 and F150) shall be capable of operating in a pressure range from 50 PSI through 120 PSI. The nozzle size range is from .7" through 1.3" for taper bore nozzles, from .86 through 1.41 for ring type nozzles and from 22mm through 34mm for taper-ring nozzles. Optional trajectory angles on the SR150 and the F150 shall be 21° 24° and 43°. The SRA150 shall have an adjustable trajectory from 15° through 45°. Materials used shall be acceptable for most irrigation water conditions. All exposed metal parts shall be stainless steel, brass, or aluminum. Welds and seals shall be air pressure checked at the factory to assure against water leakage. The gun shall be provided with optional connections at the base consisting of Nelson Flange, Metric Flange, ANSI/DIN Flange type, 3", 3 ½" or 4" Female NPT cast iron flange adapters shall be optional accessories.

2. DESIGN

1. The **sprinkler body** range tube and drive arm shall be of aluminum construction. The range tube shall have non-clog straightener vanes extended the full length of the range tube to reduce turbulence and provide greater diameter of coverage. All wear points or strike areas shall be constructed of stainless steel or polyurethane for longer life.
2. The **drive arm** shall be equipped with ball bearings at the pivot point and shall have a replaceable vaned self-cleaning drive vane. Self-adjusting drive vane to give consistent drive and arm rate in full operating range. Part circle operation shall be accomplished with dual drive and reverse drive vane. The ball bearings shall be lubricated and sealed to eliminate the need of grease zirks and frequent maintenance. The drive spoon shall be vaned for reliable drive power. The drive arm weight shall be adjustable to increase or decrease the drive power if desired.
3. The **lower bearing** assembly shall be constructed with an aluminum housing and shall be equipped with dual ball bearing for ease of rotation and less wear. The bearing assembly shall be sealed and lubricated eliminating the need for grease zirks and frequent maintenance.
4. The **braking system** shall be a constant friction disc brake of Delrin plastic material on brass. It shall have pre-load brake springs for proper rotation on uneven terrain. It shall be fully shielded to prevent contamination from outside sources.
5. The **part circle** models shall be equipped with precise arc control stops that are easily set. They shall be provided with easily accessible bolt heads or flex-handle stops as desired.
6. The sprinkler **nozzle options** shall be available with taper bore, ring or taper-ring type nozzles. All nozzle types shall be interchangeable without any adjustment required on the Big Gun® sprinkler.

200 SERIES BIG GUN SPECIFICATION

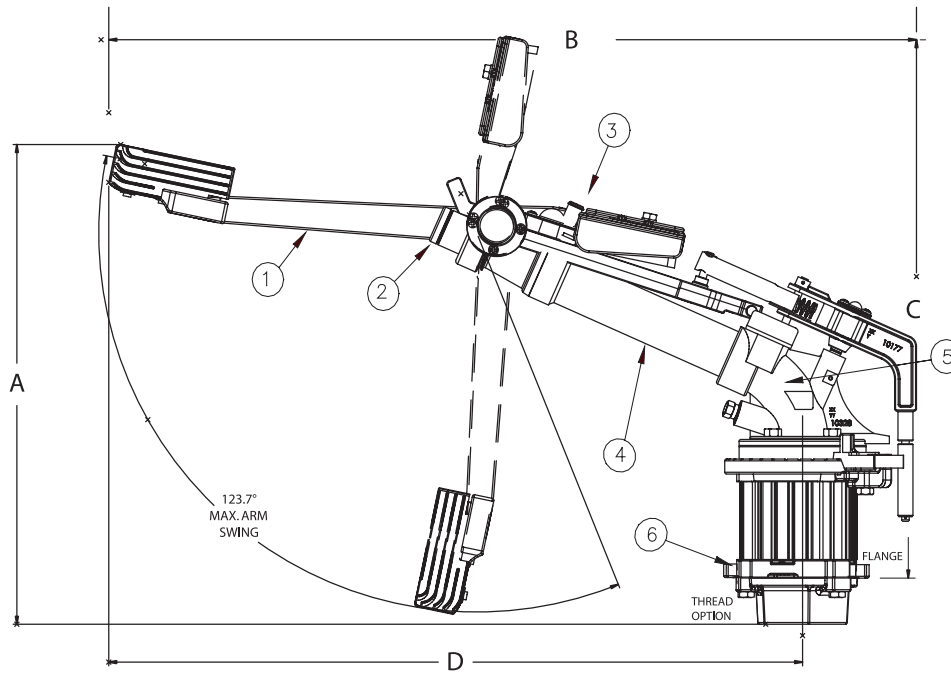
1. GENERAL:

The 200 Series Nelson Big Gun® sprinklers (models SR200 and F200) shall be capable of operating in a pressure range from 60 PSI through 130 PSI. The nozzle size range is from 1.05" through 1.9" for taper bore nozzles, from 1.29" through 1.93" for ring type nozzles and from 28 mm through 48 mm for taper-ring nozzles. Optional trajectory angles on the SR200 and the F200 shall be 21°, 24° and 27°. Materials used shall be acceptable for most irrigation water conditions. All exposed metal parts shall be stainless steel, brass, or aluminum. Welds and seals shall be air pressure checked at the factory to assure against water leakage. The gun shall be provided with optional connections at the base consisting of Nelson Flange, Metric Flange, ANSI/DIN Flange type, 3 ½" or 4" Female NPT cast iron flange adapters shall be optional accessories.

2. DESIGN

1. The **sprinkler body** range tube and drive arm shall be of aluminum construction. The range tube shall have non-clog straightener vanes extended the full length of the range tube to reduce turbulence and provide greater diameter of coverage. All wear points or strike areas shall be constructed of stainless steel or polyurethane for longer life.
2. The **drive arm** shall be equipped with ball bearings at the pivot point and shall have a replaceable vaned self-cleaning drive vane. Self-adjusting drive vane to give consistent drive and arm rate in full operating range. Part circle operation shall be accomplished with dual drive and reverse drive vane. The ball bearings shall be lubricated and sealed to eliminate the need of grease zirks and frequent maintenance. The drive spoon shall be vaned for reliable drive power. The drive arm weight shall be adjustable to increase or decrease the drive power if desired.
3. The **lower bearing** assembly shall be constructed with an aluminum housing and shall be equipped with dual ball bearing for ease of rotation and less wear. The bearing assembly shall be sealed and lubricated eliminating the need for grease zirks and frequent maintenance.
4. The **braking system** shall be a constant friction disc brake of Delrin plastic material on brass. It shall have pre-load brake springs for proper rotation on uneven terrain. It shall be fully shielded to prevent contamination from outside sources.
5. The **part circle** models shall be equipped with precise arc control stops that are easily set. They shall be provided with easily accessible bolt heads or flex-handle stops as desired.
6. The sprinkler **nozzle options** shall be available with taper bore, ring or taper-ring type nozzles. All nozzle types shall be interchangeable without any adjustment required on the Big Gun® sprinkler.

SR75



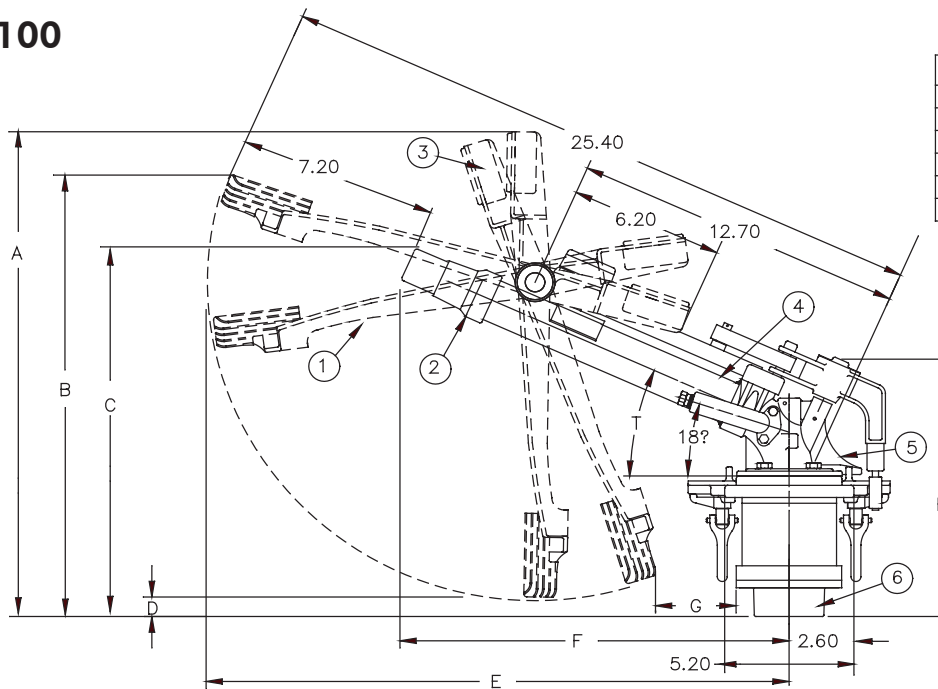
PART	MATERIAL	
1	ARM	ALUMINUM
2	NOZZLE	ALUMINUM
3	ARM WEIGHT	CAST IRON
4	RANGE TUBE	ALUMINUM
5	ELBOW	ALUMINUM
6	FLANGE	ALUMINUM

Dimension Table

	TRAJECTORY	
	18°	24°
A	15.0	16.0
B	26.5	27.0
C	19.5	20.5
D	23.5	23.2

SR75 BIG GUN OVERALL DIMENSIONS

SR100

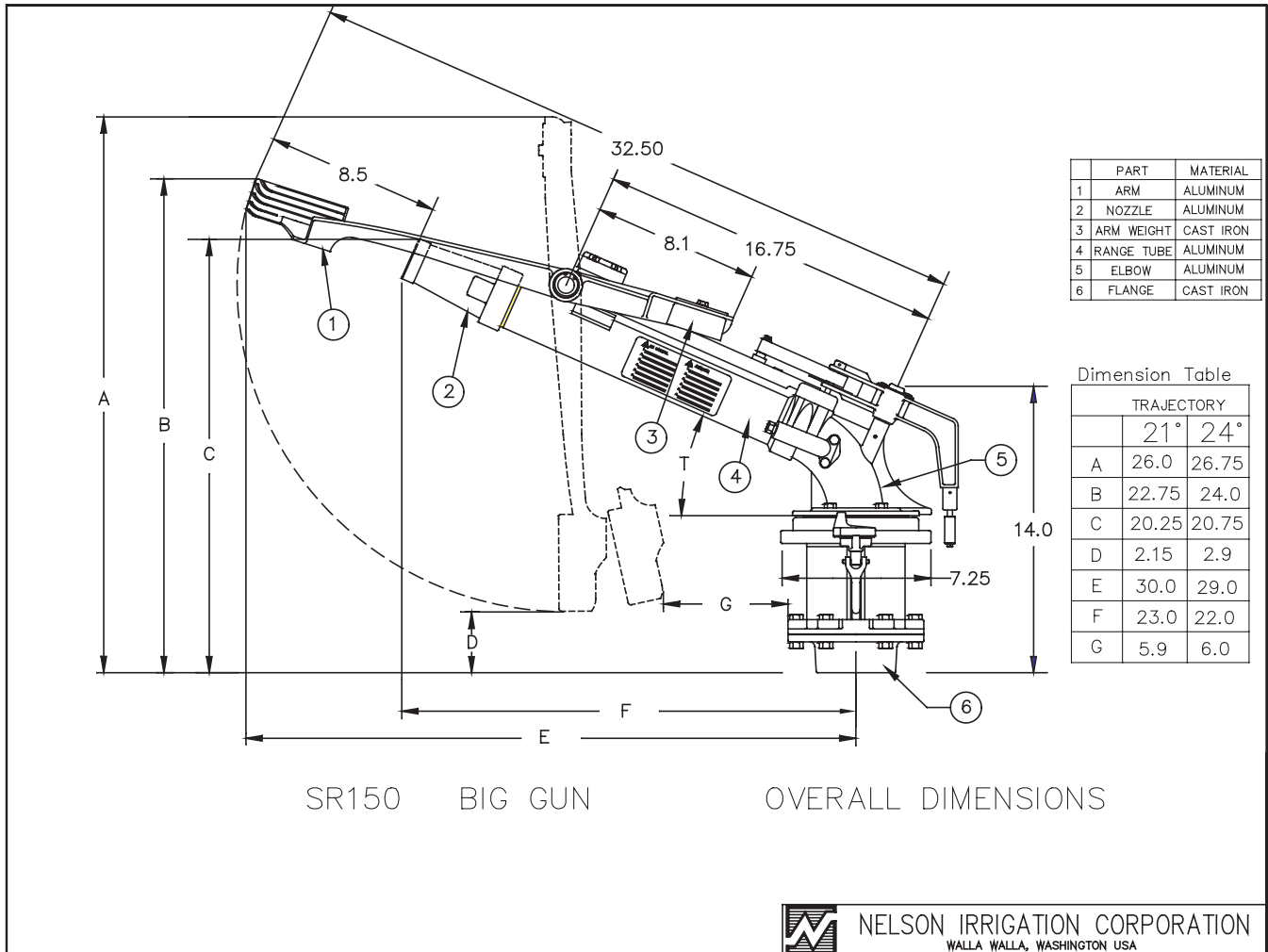


PART	MATERIAL	
1	ARM	ALUMINUM
2	NOZZLE	ALUMINUM
3	ARM WEIGHT	CAST IRON
4	RANGE TUBE	ALUMINUM
5	ELBOW	ALUMINUM
6	FLANGE	CAST IRON

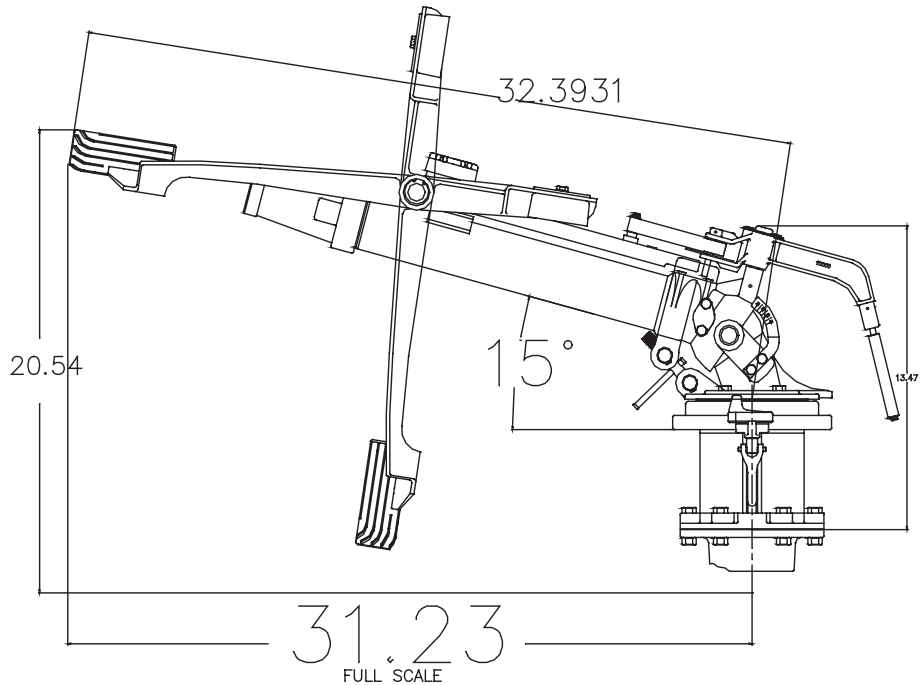
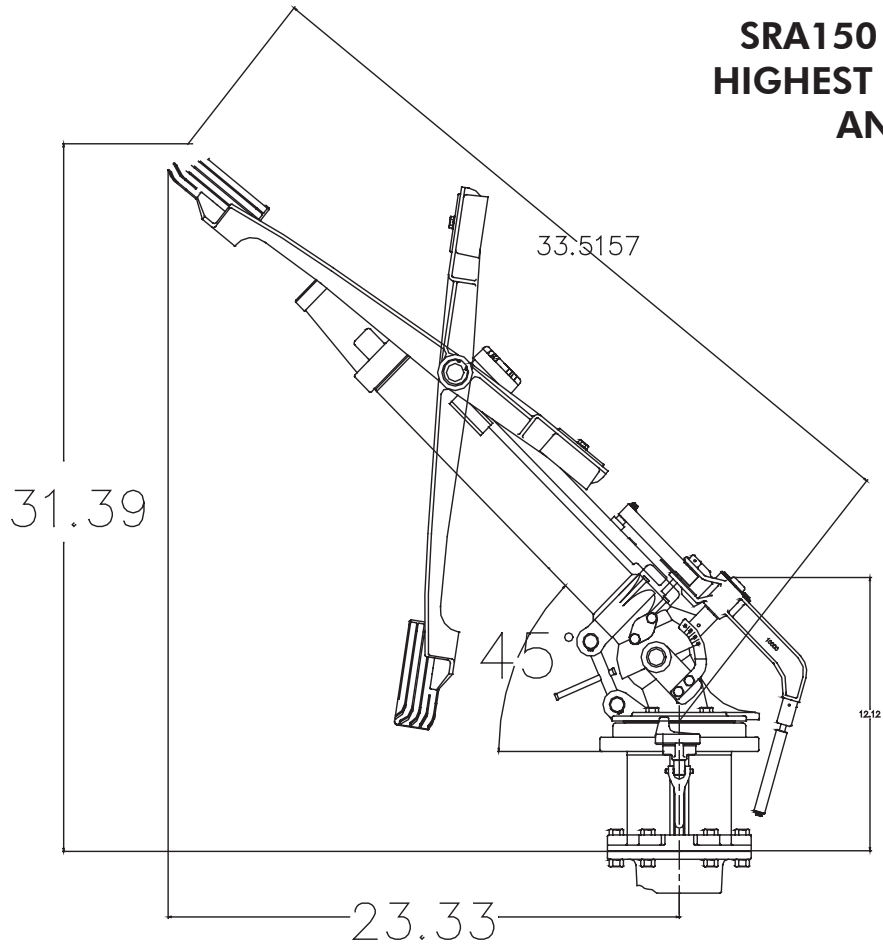
	T		
	18°	21°	24°
A	19.25	19.65	20.0
B	16.0	16.9	18.1
C	14.0	14.8	15.3
D	.25	.65	1.00
E	23.75	23.20	22.50
F	16.9	16.5	16.0
G	3.4	3.85	3.9
H	11.3	11.0	10.8

SR100 BIG GUN OVERALL DIMENSIONS

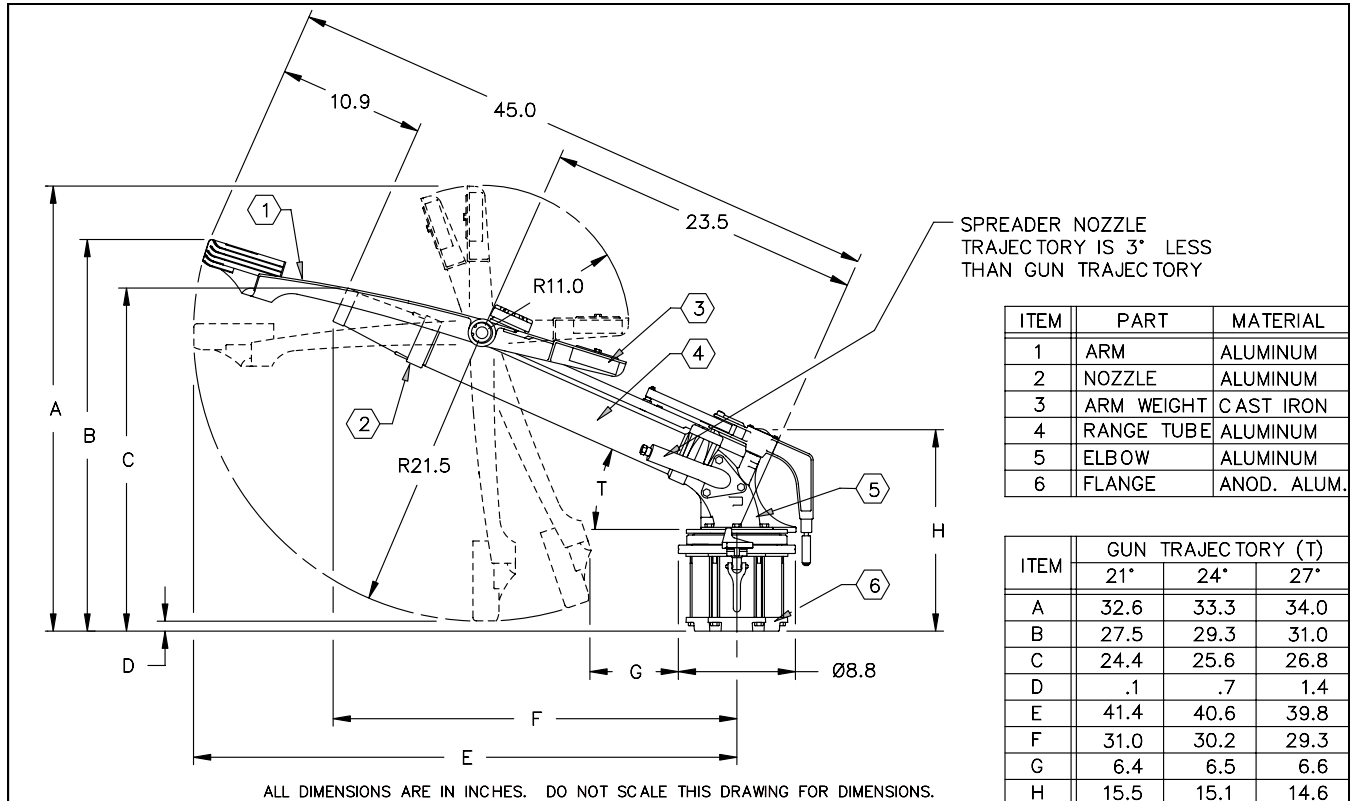
SR150 DIMENSIONS 24 DEGREE ANGLE



SRA150 DIMENSIONS HIGHEST AND LOWEST ANGLE SETTING



SR200 DIMENSIONS 24 DEGREE ANGLE



SR200 BIG GUN OVERALL DIMENSIONS



NELSON IRRIGATION CORPORATION
 WALLA WALLA, WASHINGTON USA

GENERAL BIG GUN SPRINKLER SPECIFICATIONS (CONTRACTOR)

GENERAL:

The Contractor shall supply full circle, large diameter gun-type rotating impact drive sprinklers as shown on the drawings. The sprinkler gun shall be supplied with a (n) _____ inch taper bore nozzle. The BIG GUN® shall be capable of delivering _____ gallons per minute at an operating pressure of _____ PSI covering an area of _____ feet in diameter. The trajectory angle for the sprinkler shall be _____ degrees.

MATERIALS AND CONSTRUCTION:

1. **Body:** The sprinkler body and arm shall be made of cast aluminum and shall be provided with a (n) _____ inch female NPT threaded inlet. Vanes shall be provided extending the full length of the range tube and shall be non-clog design. All wear points or strike areas shall be made of stainless steel or polyurethane.

2. **Drive Arm:** The drive arm shall be equipped with ball bearings at the pivot point and have a replaceable vaned self-cleaning drive vane. The drive vane shall be self-adjusting to give consistent drive and arm rate in the full operating range. Ball bearings shall be lubricated and sealed to eliminate the need of grease zirks and frequent maintenance. The drive arm weight shall be adjustable to increase or decrease the drive power if desired.

3. **Bearing Assembly:** The bearing assembly shall be equipped with twin ball bearings to lessen the strain and wear of the bearing assembly and shall be sealed and lubricated eliminating the need for grease zirks and frequent maintenance.

4. **Braking System:** The braking system shall be a constant friction disc brake extending uniformly around the breaking surface. It shall be of the self-adjusting type and shall be fully shielded to prevent contamination.

INSTALLATION:

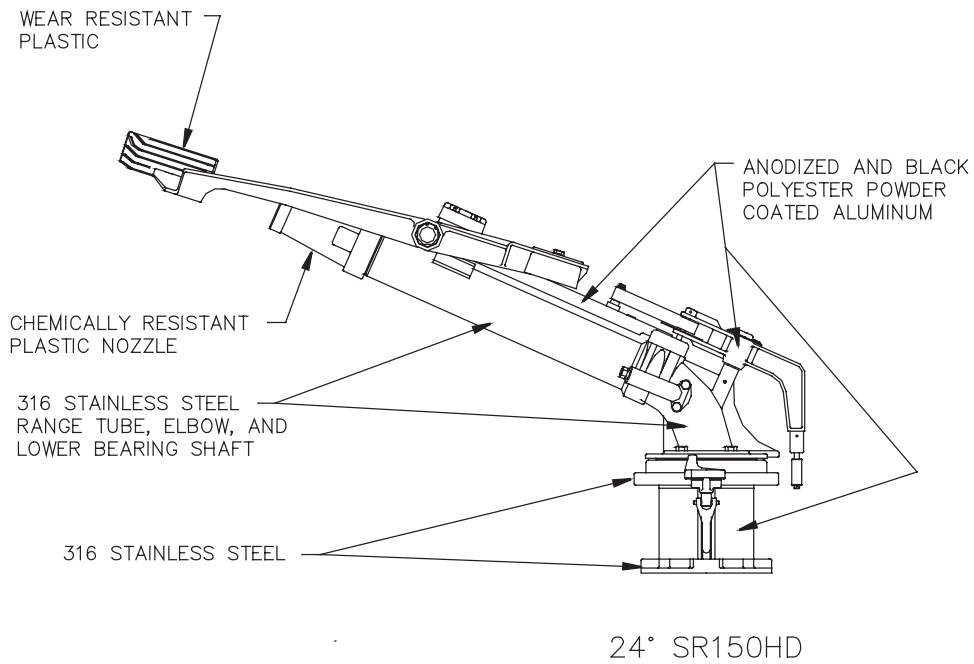
The contractor shall follow the manufacturer’s instructions and adjustment of equipment.

MANUFACTURER:

Sprinkler BIG GUN® shall be Nelson Model No. _____ .

SR150SS STAINLESS STEEL — MATERIALS

STAINLESS STEEL NELSON BIG GUN SPRINKLERS



ALL METAL COMPONENTS ARE 316 STAINLESS STEEL WELDMENTS, MACHINED CASTINGS AND ROD STOCK. THE NOZZLE IS MACHINED FROM A CHEMICALLY RESISTANT PLASTIC. SEALS ARE BUNA-N AND VITON.

NOTE: CURRENTLY ONLY THE 24° F150 AND 24° SR150 BIG GUNS ARE AVAILABLE WITH THE STAINLESS STEEL OPTION. A STAINLESS STEEL FLOWPATH VERSION WITH ALUMINUM POWDER COATED DRIVE GROUPS ARE AVAILABLE UPON REQUEST.

JUNE 99



NELSON IRRIGATION CORPORATION
 WALLA WALLA, WASHINGTON USA

THRUST FORCE OF NELSON BIG GUN® NOZZLES

The thrust force for the Big Gun can be calculated by knowing the flow rate through the gun and the nozzle pressure of the gun. The following equation shows the relationship.

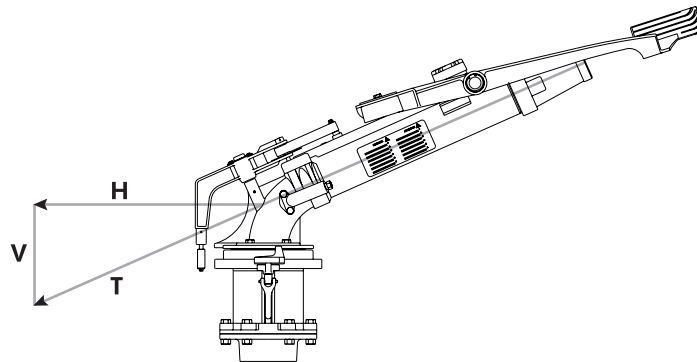
$$T = 2P \left(\frac{Q}{38\sqrt{P}} \right) \quad (1)$$

where,

T = thrust force of the nozzle (lb.)

P = nozzle pressure (psi)

Q = flow rate (gpm)



As seen in the diagram above, the thrust force is directly opposite the nozzle exit. Since the thrust force (T) is now known, the horizontal (H) and vertical (V) thrust force can be calculated using trigonometry.

$$H = T \cos (\text{gun angle from horizontal}) \quad (2)$$

$$V = T \sin (\text{gun angle from horizontal}) \quad (3)$$

The tables below show values of thrust force (T) and horizontal thrust force (H) for the 150 and 200 Big Guns of varying pressures and nozzle sizes.

T — THRUST FORCE OF 150 BIG GUN NOZZLES (LB.)

Pressure PSI	Nozzle 0.7"	Nozzle 0.8"	Nozzle 0.9"	Nozzle 1.0"	Nozzle 1.1"	Nozzle 1.2"	Nozzle 1.3"
50	37	48	62	76	95	112	130
60	45	58	74	92	112	135	157
70	53	68	87	108	130	156	183
80	60	78	99	123	148	179	210
90	68	87	111	137	167	202	237
100	75	97	124	153	187	224	263
110	83	108	136	168	204	246	290
120	91	118	149	185	222	268	314

H — HORIZONTAL THRUST FORCE OF 150 BIG GUN® NOZZLES WITH 24° TRAJECTORY (LB.)

Pressure PSI	Nozzle 0.7"	Nozzle 0.8"	Nozzle 0.9"	Nozzle 1.0"	Nozzle 1.1"	Nozzle 1.2"	Nozzle 1.3"
50	34	44	56	70	87	102	119
60	41	53	68	84	103	123	143
70	48	62	79	99	119	143	167
80	55	71	90	112	136	164	191
90	62	80	102	126	153	185	217
100	69	89	113	140	171	204	241
110	76	98	125	154	187	224	265
120	83	108	136	169	203	245	287

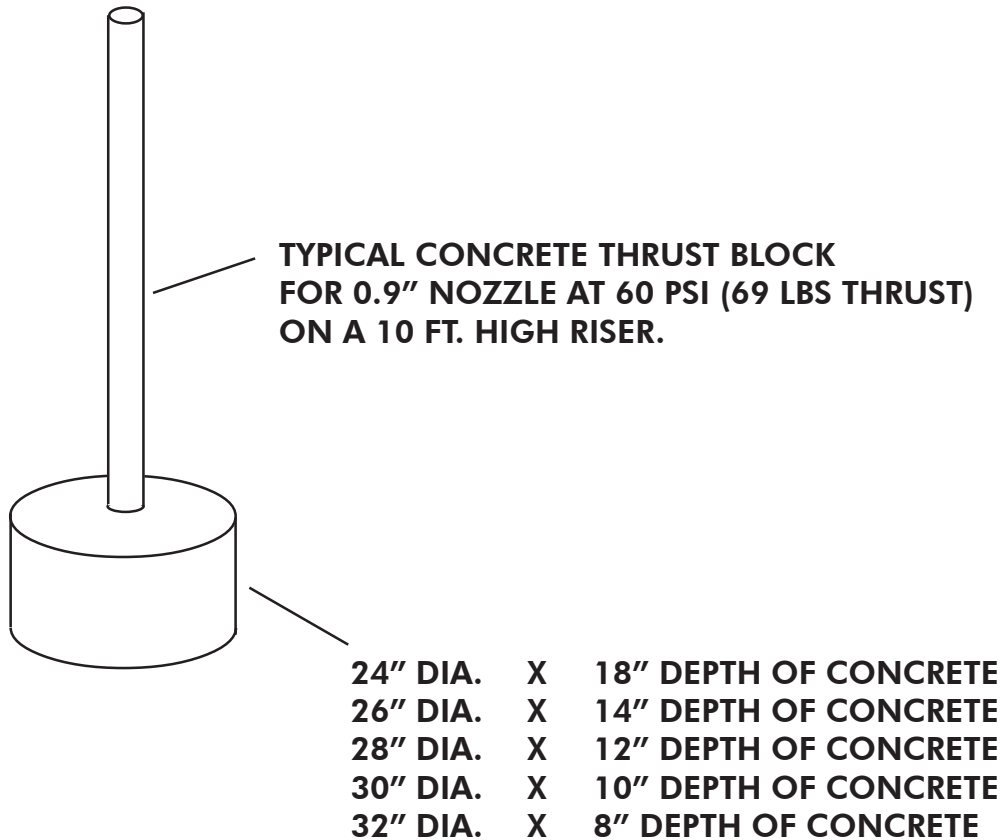
T — THRUST FORCE OF 200 BIG GUN® NOZZLES (LB.)

Pressure PSI	Nozzle 1.05"	Nozzle 1.2"	Nozzle 1.3"	Nozzle 1.4"	Nozzle 1.5"	Nozzle 1.6"	Nozzle 1.75"	Nozzle 1.9"	Nozzle 2.0"
50	93	112	130	153	175	199	238		
60	102	135	157	182	210	239	283	336	369
70	119	156	183	212	245	277	333	392	432
80	137	179	210	243	278	318	379	447	494
90	155	202	237	272	312	357	427	502	554
100	171	225	263	303	348	398	474	558	616
110	188	246	290	334	384	436	522	613	679
120	205	268	314	363	418	476	568	669	741
130	222	291	339	393	453	516	615	726	801

H — HORIZONTAL THRUST FORCE OF 200 BIG GUN® NOZZLES WITH 24° TRAJECTORY (LB.)

Pressure PSI	Nozzle 1.05"	Nozzle 1.2"	Nozzle 1.3"	Nozzle 1.4"	Nozzle 1.5"	Nozzle 1.6"	Nozzle 1.75"	Nozzle 1.9"	Nozzle 2.0"
50	85	102	119	140	160	182	218		
60	93	123	143	166	192	218	259	307	337
70	109	143	167	193	223	253	304	358	394
80	125	164	191	222	254	290	346	409	452
90	142	185	217	249	285	326	390	459	506
100	156	204	241	277	317	363	433	510	563
110	172	225	265	305	351	398	477	560	620
120	187	245	287	332	382	435	519	611	677
130	203	266	310	359	414	472	562	664	732

RISER CONFIGURATION



These are for general guidelines only under normal operating conditions. The manufacturer assumes no liability for specific purposes or damage. Normal product warranty and disclaimer applies.

GUN AND VALVE COMBINATION

The Nelson Big Gun® sprinklers are capable of operating in combination with an 800 series control valve when specified with the ANSI flange connection. The SR75 and SR100 connects with the 2" size valve. The SR150 connects with the 3" size valve. The SR200 connects with the 4" size valve. The result is a smooth operating and efficient low pressure loss control. The valves have a fail safe feature as a normally closed valve.

Specify gun connection:
 ANSI flange

Specify 800 Series valve:
 A2"B7C2D1E1H1 for 100 size gun
 A3"B1C2D1E1H1 for 150 size gun
 A4"B1C2D1E1H1 for 200 size gun



The control valves are designed for application in harsh environments. High grade corrosion-resistant materials are used in the manufacturing of the valves. Materials are galvanized steel, brass, coated ductile iron, anodized aluminum and specially compounded rubber. The valves can be specified with electric on/off solenoid control and pressure control if needed.



COUNTER BALANCE FOR OPERATION ON TILTED RISERS

A counter balance kit can be attached to the 100 Series and the 150 Series gun sprinklers to achieve even rotation rate when riser is tilted at an angle. It is easy to install and retrofits existing guns in the field.

OPTIONAL QUICK COUPLING VALVE AND KEY

The SR75, SR100 and F100 guns can be ordered with a quick coupling key for easy portability. The key is designed to connect to a 2" or 3" size quick coupling valve. The valve control can be by manual or electric solenoid.

NELSON QUICK COUPLING VALVE

2" QC SPECIFICATION

The Nelson Quick Coupling (QC) valve and key are designed to be used in conjunction with the Nelson SR75 and SR100 sprinkler guns. The valve, key and sprinkler are necessary for operation.



The valve inlet is to be connected to the water supply pipe system. The valve can be installed below ground level in a 10 inch round valve box or above ground level on a supported riser pipe of 2" or 3" diameter size. The valve outlet is normally closed to flow and can be opened only with the quick coupling key.

The key is designed in such a manner as to allow direct connection to the sprinkler gun base. The key can also be connected to the sprinkler gun using a 2 inch diameter male x male nipple (the maximum nipple length approved is 12 inches). The key is designed to connect directly to the valve. The key is easily attached to the valve by a quick one-quarter turn that locks the key and valve together.

Opening the valve is done by connecting the key hydraulic pilot to the valve. The key operates hydraulically pressing the valve seat to the open condition. When the valve is opened, the hydraulic pressure locks the valve, key and gun together to become a very rigid and stable unit.

Operating Range

Pressure range: 30 psi minimum, 125 psi maximum
 Flow rate: 25 gpm minimum, 250 gpm maximum

Water temperature range: 32° F to 150° F

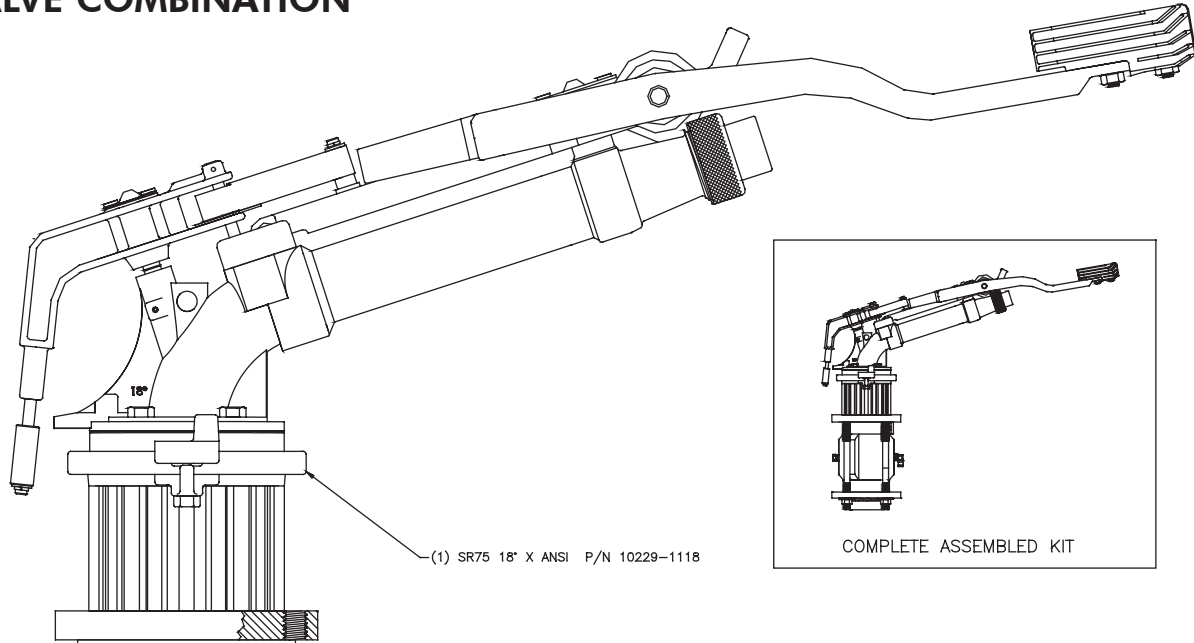
Materials Specifications

<u>Product</u>	<u>Materials:</u>
Valve Body	Cast Iron and Brass
Valve trim	Brass
Seals (both valve and key)	BUNA N
Key body	Stainless Steel and Cast iron/aluminum
Key Diaphragm	Buna N/Dacron
Internal springs	Stainless steel
Pilot hose	Buna N

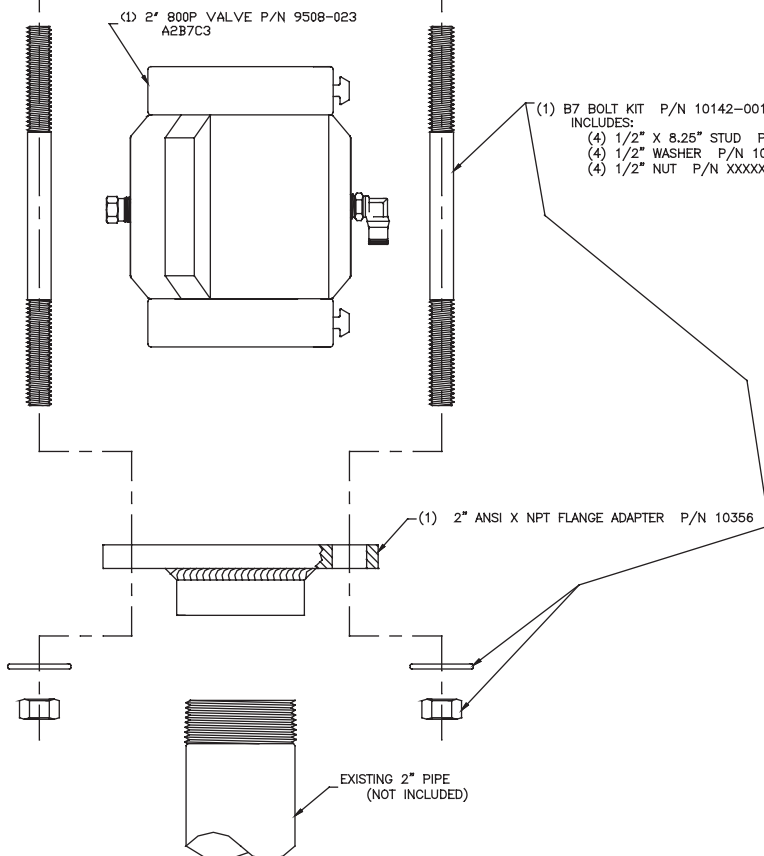
Application fluid: Water only.

Air venting design: The Nelson QC valve is designed to manually vent the air that may be trapped under the valve. This can be done by using the pilot opening handle to vent the air before connecting the key.

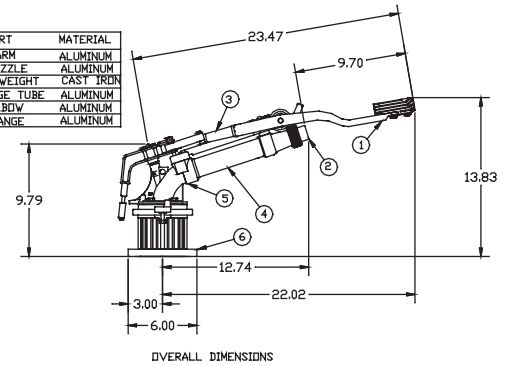
NELSON SR75 GUN/800P VALVE COMBINATION



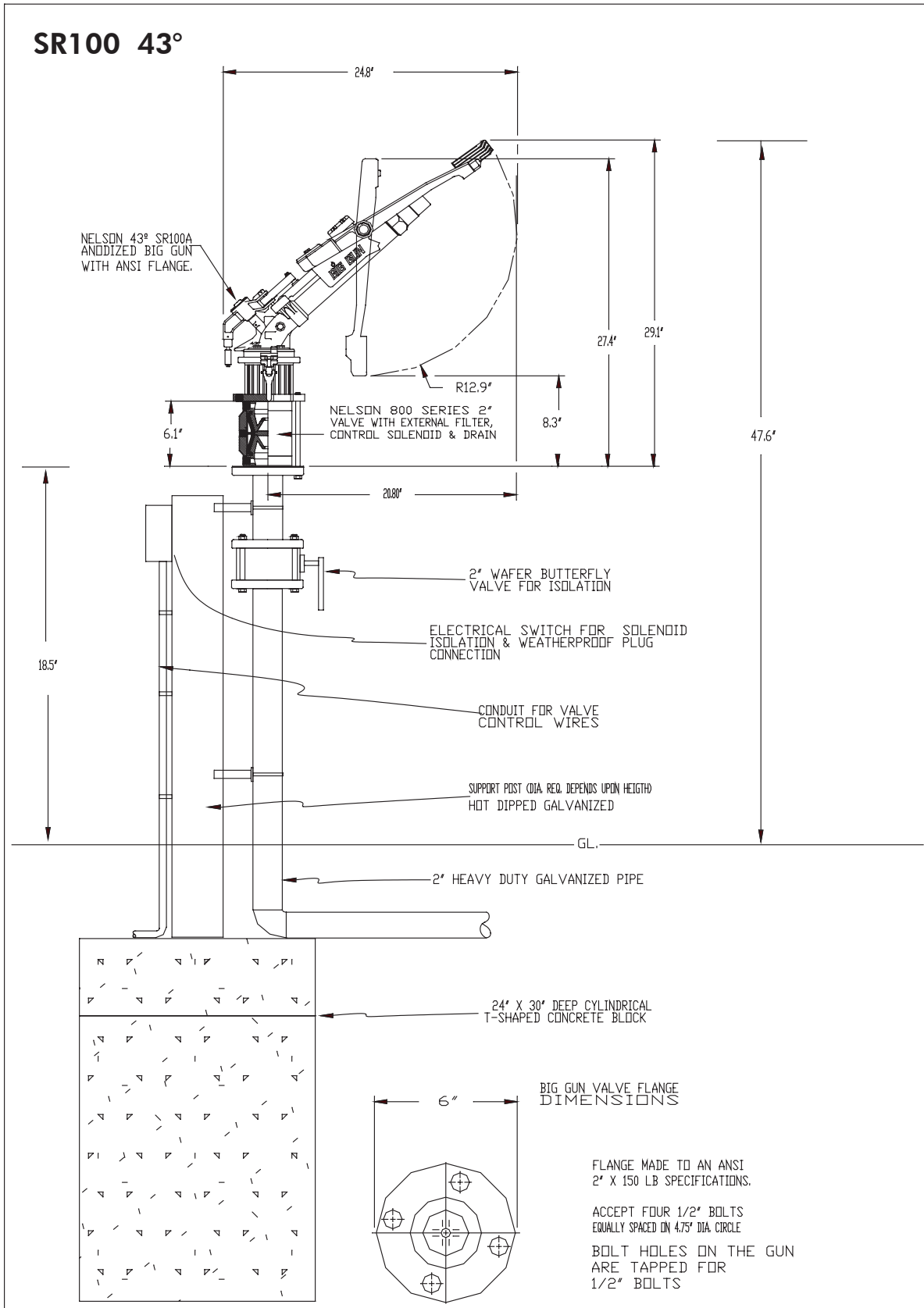
BIG GUN SPECIFICATIONS			800P VALVE SPECIFICATIONS		
MODEL	TRAJECTORY	CONNECTION	SIZE	CONNECTION	PRESSURE RANGE
SR75	18"	2" ANSI	2" (A2)	WAFER (B7)	18-80PSI (C3)



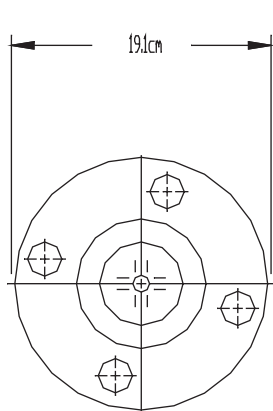
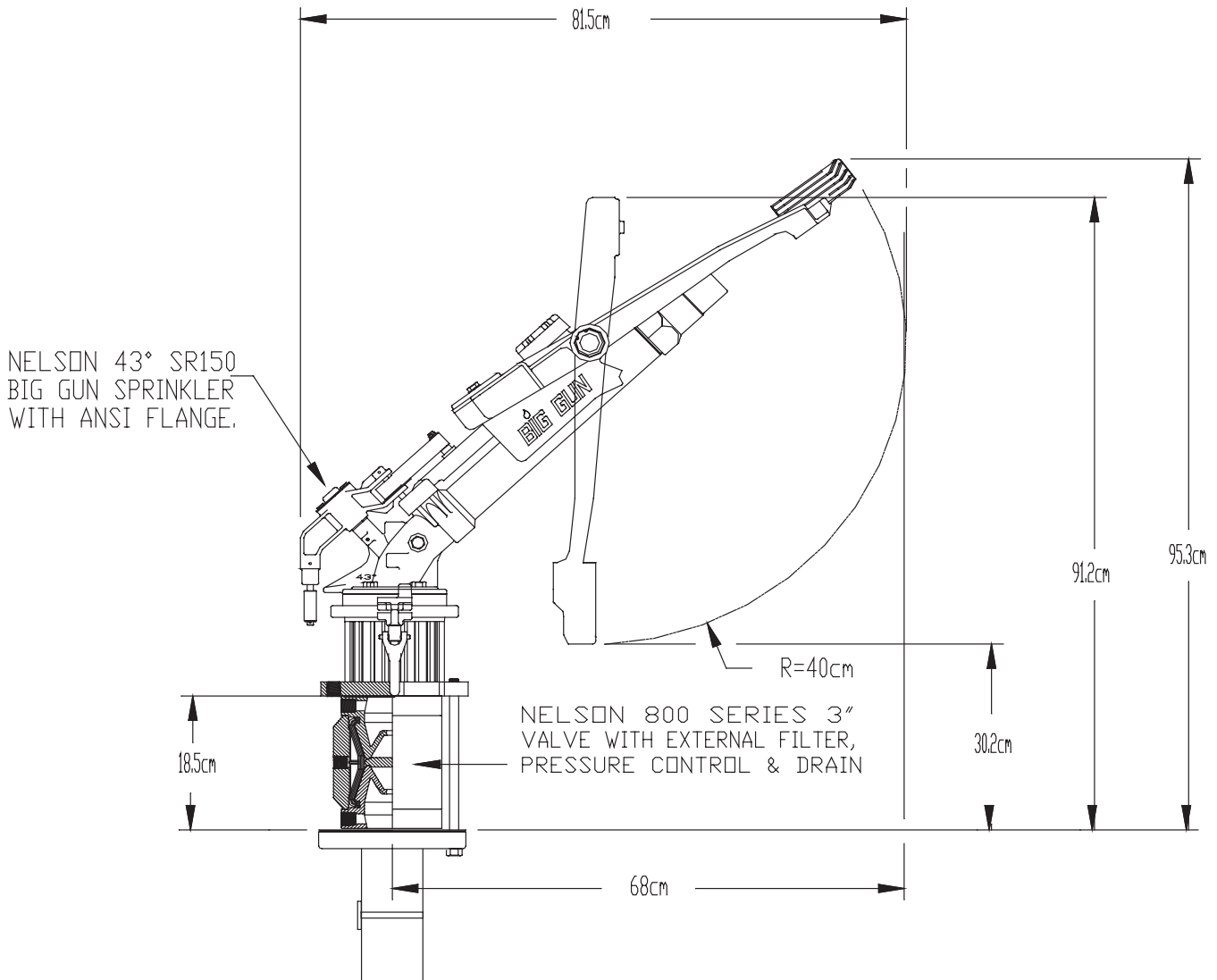
PART	MATERIAL
1	ARM ALUMINUM
2	NOZZLE ALUMINUM
3	ARM WEIGHT CAST IRON
4	RANGE TUBE ALUMINUM
5	ELBOW ALUMINUM
6	FLANGE ALUMINUM



BOLT LENGTHS	FLANGE TEMPLATES	WAFER STYLE VALVE LENGTH
<p>2 INCH VALVE 1/4" TUBE</p> <p>4 BOLTS REQUIRED 1/2" X 8.25" LENGTH USE WASHER IF FLANGE HAS OVERSIZED HOLES.</p>	<p>FLANGE TEMPLATE FOR USE WITH WAFER STYLE VALVES.</p> <p>52mm 12cm 4.75" 6"</p>	<p>6.1 INCHES (15.5 CM)</p>



SR150 43° + 800 SERIES 3" VALVE DIMENSIONS (METRIC)



BIG GUN VALVE FLANGE
 DIMENSIONS

FLANGE MATE TO AN ANSI
 3" FLANGE SPECIFICATION

ACCEPT FOUR 1/2" BOLTS
 EQUALLY SPACED ON 15.2cm DIA. CIRCLE

BOLT HOLES ON THE GUN
 ARE TAPPED FOR
 1/2" BOLTS

