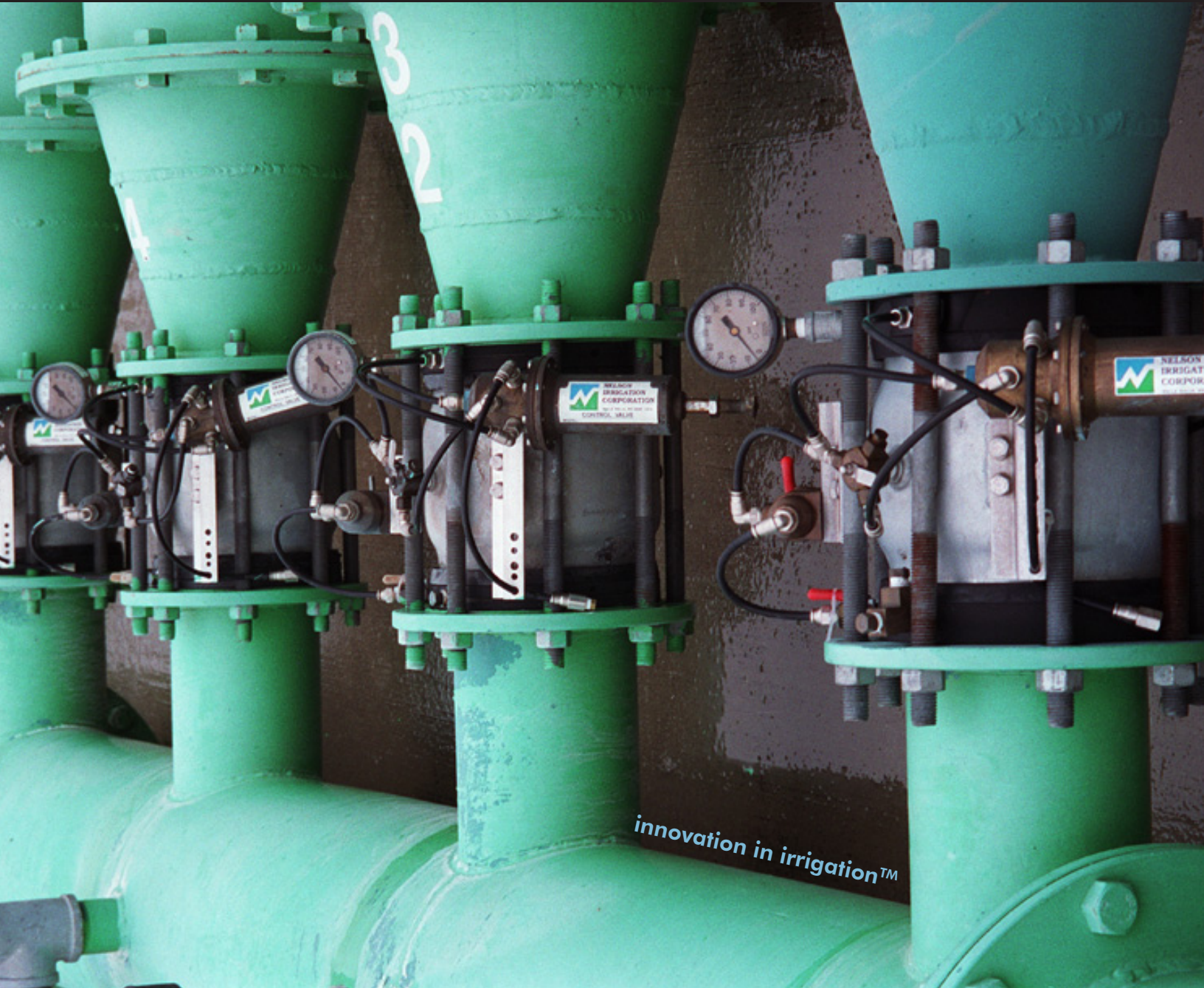


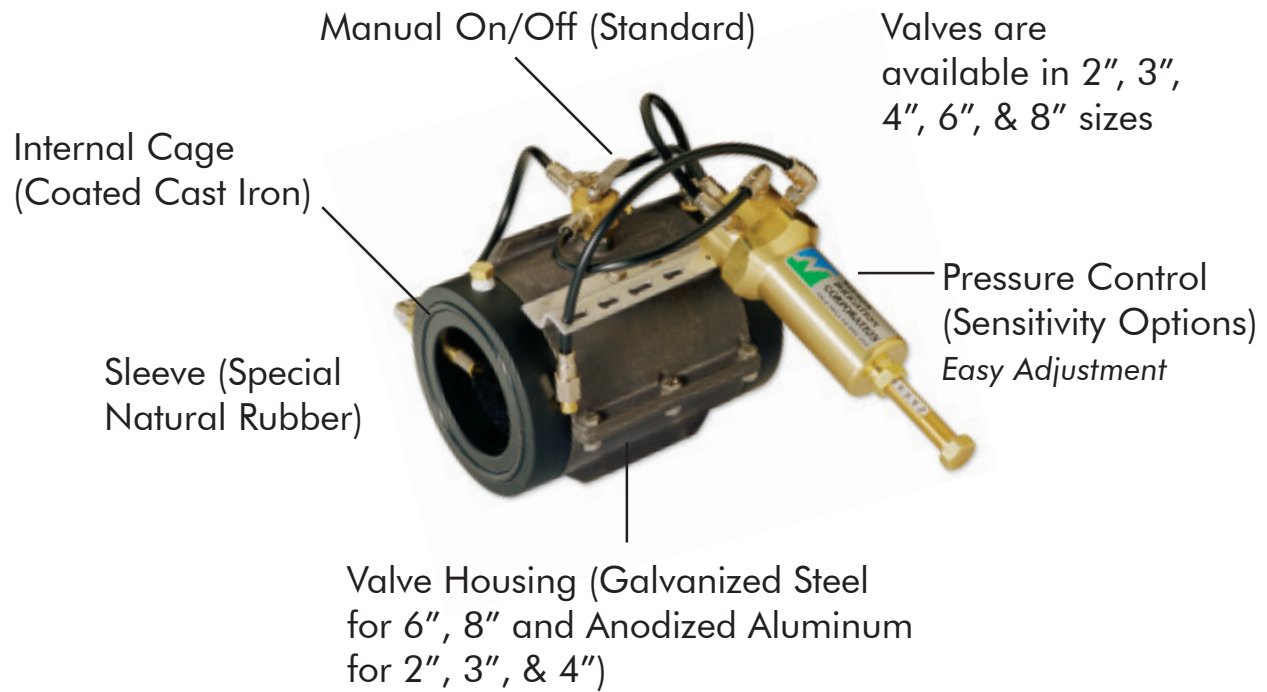
800 SERIES CONTROL VALVES

NELSON. THE QUALITY NAME IN CONTROL VALVES.



 ***NELSON IRRIGATION CORPORATION***

800 SERIES CONTROL VALVES



QUALITY CONTROL

You'll recognize the exceptional quality of a Nelson 800 Series Control Valve the instant you see it. Examine the smooth, precision-manufactured finish and details. Also note the high grade materials we've used in making it: corrosion-resistant galvanized steel, brass, coated cast iron, anodized aluminum and special natural rubber.

You'll more fully appreciate the extra built-in quality and reliability of a Nelson control valve when it performs under the most demanding operating conditions. As a hydraulically operated sleeve type valve, the 800 Series is designed for versatility. The basic body can be equipped with several different control packages in various combinations for controlling pressure and flow in large piping systems. It's also engineered for extremely high efficiency, resulting in low friction loss and high capacity. It's light weight and compact for ease of shipping, handling and service. To be sure you're buying a quality control valve, look for the name. **NELSON.**

APPLICATIONS

1. System Headworks
2. Drip Irrigation System
3. Pivot End Gun Control Valve
4. Zone Control

Nelson 800 Series Control Valves can be used on a variety of Irrigation Systems.

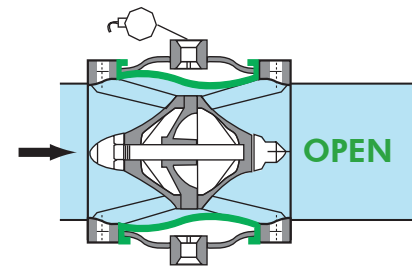
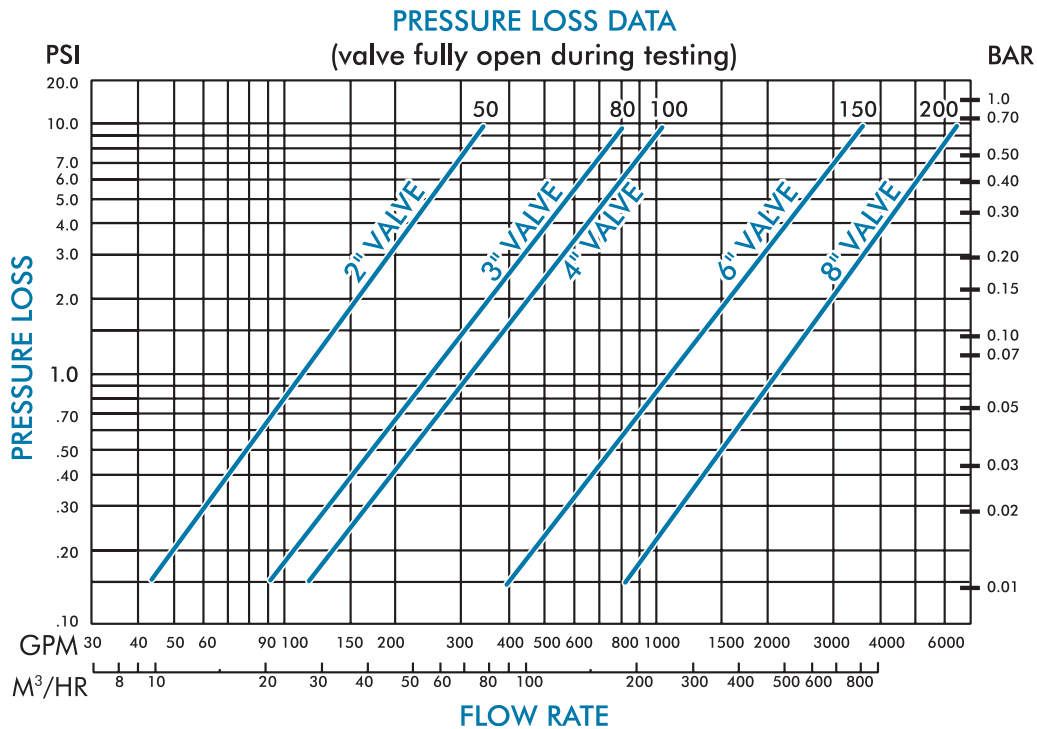


OPTIONS

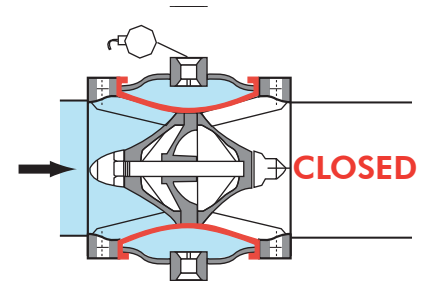
- Basic Valve (Hydraulic Operation)
- Manual On/Off Control
- Solenoid Control
- Pressure Reducing
- Pressure Sustaining
- Rate-of-Flow Control
- Check Valve
- Hydraulic Remote Control



BASIC OPERATION



Water pressure is relieved from the sleeve chamber, allowing the valve to open.



Upstream water is applied to the outer sleeve chamber, the sleeve becomes hydraulically balanced and the flow passage is closed off by the sleeve pressing against the center seat.



FEATURES & BENEFITS

- Ability to run entire system at a lower pressure, saving on energy costs.
- High-flow capacity with low friction loss.
- Superior pressure control.
- Lightweight and compact design for easy shipping, installation and repair.
- Special natural rubber sleeve diaphragm which is resilient under high pressure, resistant to common irrigation chemicals, and flexible to assure leakproof shutoff.
- Highest quality heavy duty materials of corrosion resistant galvanized steel, brass and coated cast iron and a hard chromed pressure regulating spool.
- Special design that requires minimal water flow to operate, reducing solenoid and regulator plugging.
- Self-flushing inlet screen.
- Top-quality quick-release tubing connectors.
- Freeze proof external filter.
- Valve Selector Software.

TO ORDER:
Specify 800 Series Control Valve and Select From Each Letter
Option and a Pressure Gauge Option

Any item in section D, E, & H can be ordered separately as a Kit.
Specify the option letter and number (example "E60" for a 220
VAC 1/16" Solenoid Kit.)

A		B		C		D		E		H	
VALVE SIZE	VALVE CONNECTION STYLE	VALVE OPERATING PRESSURE		CONTROL FUNCTION (PSI in this column indicates range of adjustment.)		ON/OFF MODE		FILTER OPTIONS			
A2"	B3	THREAD	C1	10-50 PSI	D1	MANUAL ON/OFF CTRL.	E1	NO SOLENOID	H2	EXTERNAL	
	B4	WAFER WITHOUT BOLTS	C2	30-200 PSI	D6	SLEEVE EXHAUST	E21	12VDC 1/16" (.6 AMP MAX)			
	B5	WAFER WITH BOLTS INCLUDED	C3	18-80 PSI	D7	SHUTTLE CHECK VALVE <small>(Must accompany solenoid or sustaining control.)</small>	E23	9/12VDC LATCHING <small>(Use with Solorain Valve Controllers.)</small>	H3	INTERNAL	
A3"	B6	VICTAULIC			D12	REDUCING 5-50 PSI	E43	24VAC (.13 AMP)			
	B7	WAFER FOR BIG GUN ANSI — WITH BOLTS 2"/3" Valve			D13	REDUCING 10-120 PSI	E44	24VAC LDOS <small>(Long Distance Operating Solenoid)</small>			
					D15	SUSTAINING 5-50 PSI	E46	24VAC 1/16" (.43 AMP Inrush)			
					D16	SUSTAINING 10-120 PSI	E53	120VAC			
					D18	RATE OF FLOW					

Sample: **A6" B5 C2 D3 E50 H3**
This configuration represents a 6" valve with wafer style connection (bolts included), 30 to 200 PSI pressure rating, pressure reducing (10 - 120 PSI) control package with a 120VAC 1/16" solenoid, and an internal filter.

Select options for 4-8" sizes from the list below.

A4"	B4	WAFER WITHOUT BOLTS	C1	10-50 PSI	D1	MANUAL ON/OFF CTRL.	E1	NO SOLENOID	H2	EXTERNAL
	B5	WAFER WITH BOLTS INCLUDED	C2	30-200 PSI	D2	REDUCING 5-50 PSI	E20	12-24VDC 1/16" LATCHING <small>(.5 AMP MAX)</small>	H3	INTERNAL
	B7	WAFER FOR BIG GUN ANSI — WITH BOLTS 4" Valve <small>(only)</small>	C3	18-80 PSI	D3	REDUCING 10-120 PSI	E21	12VDC 1/16" (.6 AMP MAX)		
A6"					D4	REDUCING 25-200 PSI	E23	9/12VDC LATCHING <small>(Use with Solorain Valve Controllers.)</small>		
					D5	SUSTAINING 25-200 PSI	E24	9/12VDC LATCHING <small>(Use with Solorain Valve Controllers.)</small>		
					D6	SLEEVE EXHAUST	E30	24VDC 1/16" (.3 AMP MAX)		
A8"					D7	SHUTTLE CHECK VALVE <small>(Must accompany solenoid or sustaining control.)</small>	E40	24VAC 1/16" (.15 AMP Inrush)		
					D8	SUSTAINING 10-120 PSI	E41	24VAC 1/16" (1.1 AMP Inrush) <small>(Heavy Duty)</small>		
					D9	SUSTAINING 5-50 PSI	E42	24VAC 1/8" (3.6 AMP)		
					D18	RATE OF FLOW <small>(In-valve mount available on 6" and 8".)</small>	E46	24VAC 1/16" (.43 AMP Inrush)		
							E50	120VAC 1/16"		
							E52	120VAC 1/8"		
							E80	Hydraulic Remote Ctrl.		

WARRANTY AND DISCLAIMER: Nelson 800 Series Control Valves, Control Kits, and Accessories are warranted for one year from the date of original sale to be free of defective material and workmanship when used within the working specifications for which the products was designed and under normal use and service. The manufacturer assumes no responsibility for installation, removal or unauthorized repair of defective parts and the manufacturer will not be liable for any crop or other consequential damages resulting from any defects or breach of warranty. THIS WARRANTY IS EXPRESSLY IN LIEU OF ALL OTHER WARRANTIES, EXPRESS OR IMPLIED, INCLUDING THE WARRANTIES OF MERCHANTABILITY AND FITNESS FOR PARTICULAR PURPOSES AND OF ALL OTHER OBLIGATIONS OR LIABILITIES OF MANUFACTURER. No agent, employee or representative of the manufacturer has authority to waive, alter or add to the provisions of this warranty nor to make any representations or warranty not contained herein.



Nelson Irrigation Corporation

848 Airport Road, Walla Walla, WA 99362-2271, U.S.A.

Tel: 509.525.7660 Fax: 509.525.7907 E-mail: info@nelsonirrigation.com

www.nelsonirrigation.com